

සියලු ම හිමිකම් ඇවිරිණි / முழுப் பதிப்புரிமையுடையது / All Rights Reserved]

නව කිර්දේශය/புதிய பாடத்திட்டம்/New Syllabus

**NEW** **61 | E | I, II**

Department of Examinations, Sri Lanka

අධ්‍යයන පොදු සහතික පත්‍ර (සාමාන්‍ය පෙළ) විභාගය, 2017 දෙසැම්බර්  
கல்விப் பொதுத் தராதரப் பத்திர (சாதாரண தர)ப் பரீட்சை, 2017 டிசெம்பர்  
**General Certificate of Education (Ord. Level) Examination, December 2017**

භූගෝල විද්‍යාව I, II  
புவியியல் I, II  
**Geography I, II**

පැය තුනයි  
மூன்று மணித்தியாலம்  
**Three hours**

Index No. : .....

**Geography I**

- \* This question paper comprises 40 questions.
- \* Answer all questions on this paper itself in accordance with the instructions given for each question.

- Select, from the answers given within brackets, the answer that suits the blank in each question from No. 1 to 10 and write it on the dotted line.
- 1. Of the total volume of gases in the atmosphere nearly ..... exist within the area about 6 km from the Earth's surface.  
(25% / 50% / 75%)
- 2. A special feature of the ..... is the decrease in temperature with altitude.  
(Troposphere / Stratosphere / Thermosphere)
- 3. Papua New Guinea island is located in the continental shelf of .....  
(Asia / Africa / Australia)
- 4. The river Danube flows into the ..... sea.  
(Mediterranean / Black / Caspian)
- 5. Of the countries in the Western Europe, ..... is famous for commercial dairy industry.  
(Italy / France / Denmark)
- 6. Saline sandy soils and undulated land are more suitable for ..... cultivation.  
(coconut / paddy / rubber)
- 7. The Minor Export Crops Research Institute in Sri Lanka is located in .....  
(Kandy / Matale / Hambantota)
- 8. .... is important as an area for Brass-ware Industry a traditional handicraft industry in Sri Lanka.  
(Ambalangoda / Moratuwa / Pilimatalawa)
- 9. In the figure showing the direction in the 1 : 50 000 topographic maps the line ending with a star, denotes .....  
(True North / Magnetic North / Grid North)
- 10. .... has been declared as a Strictly Protected Natural Reserve Area of Sri Lanka.  
(Ritigala / Wilpattu / Hortan Plains)

- Read each statement given under questions from No. 11 to 15 and circle **C** if it is correct and circle **W** if it is incorrect.
- 11. The oceanic boundary enclosing the Mannar sea area, Palk Straits and Bay of Bengal that belongs to the Indo - Sri Lanka boundary is called Historical Waters. **C / W**
- 12. The widely used source of energy in Sri Lanka is petroleum. **C / W**
- 13. Of the total population of the world about 90% lives in the Southern Hemisphere. **C / W**
- 14. According to the Human Development Index the countries of the world are divided into four development groups. **C / W**
- 15. The decision to minimize the CFC emission activities and eliminate them totally after 2000 A.D. was taken at the 'Earth Summit' convened in 1992. **C / W**

- There are two columns designated as **A** and **B** for questions from 16 to 19. Write the **number** of the correct answer **on the dotted line** when they are matched according to their relationship.
- 16. A few minerals found in Sri Lanka are shown in column **A**. The places where they are deposited are given in column **B**. Select the correct answer when column **B** is matched according to the order shown in column **A**.

<b>A</b>		<b>B</b>	
1. Gems		A - Pulmoddai	
2. Zircon		B - Okkampitiya	
3. Ilmenite		C - Mirigama	
		D - Marawila	
(1) A, B, C	(2) B, C, A	(3) B, D, A	(4) B, A, D (.....)

17. A few zones of soils that could be widely found in Sri Lanka are shown in column **A**. In column **B** the areas where they are distributed are given. Select the correct answer when column **B** is matched according to the order shown in column **A**.

<b>A</b>		<b>B</b>	
1. Non-calcareous Brown soils		A - The coastal area from Puttalam to Mullativu	
2. Red yellow Latexol soils		B - Ampara and Batticaloa districts	
3. Solidex soils		C - Damana and Tamankaduwa region	
		D - Lowland wet zone districts	
(1) A, B, C	(2) B, C, D	(3) D, B, A	(4) B, A, C (.....)

18. The names of few continents of the world are given in column **A** and in column **B** names of few lakes located on them are shown. Select the correct answer when column **B** is matched according to the order shown in column **A**.

<b>A</b>		<b>B</b>	
1. Asia		A - Lake Ladoga	
2. Europe		B - Lake Titicaca	
3. Australia		C - Lake Baikal	
		D - Lake Eire	
(1) A, C, B	(2) C, D, A	(3) C, A, D	(4) B, A, C (.....)

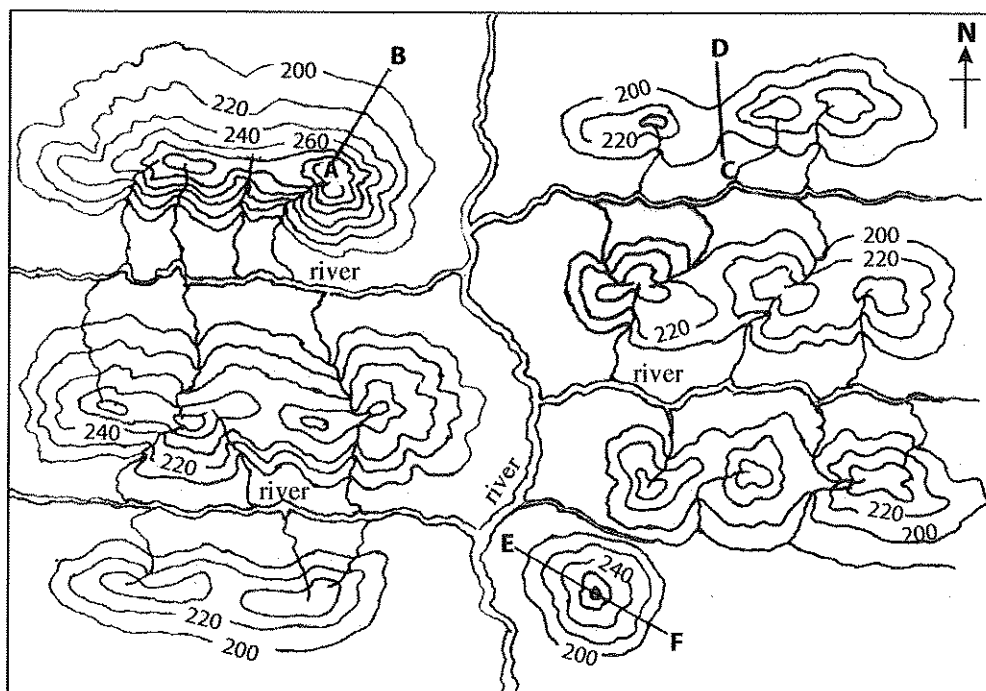
19. Three paddy cultivating countries are shown in column **A** while column **B** showing a few river valleys in those countries where paddy is cultivated. Select the correct answer when column **B** is matched according to the order shown in column **A**.

<b>A</b>		<b>B</b>	
1. United States of America		A - Po River valley	
2. Australia		B - Sacramento River valley	
3. Italy		C - Nile Delta	
		D - Murray-Darling River valley	
(1) B, D, A	(2) D, A, B	(3) A, B, C	(4) B, C, D (.....)

- In the sentences from No. 20 to 26, fill in the blanks with suitable words.

20. Mariana and Mindanao ocean trenches are located in the ..... ocean.
21. .... is the country that has gained dominance in the field of Electronics Industries in the East Asian Region.
22. The Northern latitude  $23\frac{1}{2}^{\circ}$  is known as the tropic of .....
23. In the mountain areas of Sri Lanka, paddy is cultivated according to the ..... cultivation method.
24. The highest contribution from the agricultural sector to the Gross Domestic Product of Sri Lanka is provided by ..... cultivation.
25. In 1 : 50 000 topographic maps landforms are shown by .....
26. .... graphs are widely used to depict variables like temperature that changes with time continuously.

- Make use of the diagram provided to answer the questions No. 27 to 30.



27. In the diagram the line A-B shows a ..... slope.
28. In the diagram the landform shown by line C-D is a .....
29. In the diagram the landform shown by line E-F is a .....
30. According to the diagram, ..... drainage pattern exists in this area.

- For each question from No. 31 to 40, select the **correct** or the **most appropriate** answer from the four answers given and **write its number on the dotted line** provided against it.

31. An example for metamorphosed rock is  
 (1) coal. (2) diamonds. (3) granite. (4) basalt. (.....)

32. The Nullabor plains is located in  
 (1) Australia. (2) India. (3) South Africa. (4) Russia. (.....)

33. ● Rainfall between 300 mm and 500 mm  
 ● Cool wet climate during the plant growing season  
 ● Well - drained plains  
 ● Chernozem soil

For which cultivation are the above physical factors important?

(1) Paddy (2) Barley (3) Wheat (4) Millet (.....)

34. The Dairy Cattle Centre of Sri Lanka which has been set up to exchange lactating cows is located at  
 (1) Ambewela. (2) Kananwila. (3) Walpita. (4) Meewanapalana. (.....)

35. A few locations of export villages in Sri Lanka are given in column **A** while column **B** showing the export crops related to those locations. Select the correct answer when the column **B** is matched according to the order shown in column **A**.

A	B
1. Dambadeniya	A. Betels
2. Rajanganaya	B. Cashew
3. Katugampola	C. Chilli
	D. Flower
(1) A, B, D	(2) B, C, A
	(3) D, C, B
	(4) C, A, B (.....)

36. Three rivers related to hydroelectricity power stations in Sri Lanka are given in column **A**. In column **B** the power stations associated with them are shown. Select the correct answer when column **B** is matched according to the order shown in column **A**.

A	B
1. Kelani River	A. Victoria
2. Mahaveli River	B. Canyon
3. Kalu Ganga	C. Inginiyagala
	D. Kukule Ganga
(1) D, A, C	(2) A, B, C
	(3) B, A, D
	(4) B, C, D (.....)

37. ● Installation of warning systems  
 ● Making the community aware and community participation  
 ● Strengthening of Disaster Management Institutions

To which stage of the Disaster Management Cycle are the above mentioned measures on disaster management related?

(1) Preparation (2) Response (3) Recovery (4) Mitigation (.....)

38. The season during which the cyclone hazard widely affects the Northern and Eastern Sri Lanka is  
 (1) October and November. (2) March and April.  
 (3) January and February. (4) July and August. (.....)

- Use the following information to answer the questions 39 and 40.

A - Sex ratio  
 B - Ageing population  
 C - Air pollution  
 D - Crude Death rate  
 E - Fossil Fuel use

39. The answer that contains the two letters indicating a decline in one factor leads to an increase in another factor is  
 (1) D and B. (2) A and B. (3) C and D. (4) A and D. (.....)

40. The answer that contains the two letters indicating an increase in one factor leads to an increase in another factor is  
 (1) A and B (2) C and D (3) E and C (4) B and A (.....)

\* \*

கிடைக்கக்கூடிய அனைத்து உரிமைகளும் பதிப்பரிமையுடையது / All Rights Reserved

**නව නිර්දේශය/புதிய பாடத்திட்டம்/New Syllabus**

**NEW** **61 E I, II**

இலங்கைப் பரீட்சைத் திணைக்களம் / இலங்கைப் பரீட்சைத் திணைக்களம் / இலங்கைப் பரීட்சைத் திணைக்களம்  
 Department of Examinations, Sri Lanka

**අධ්‍යයන පොදු සහතික පත්‍ර (සාමාන්‍ය පෙළ) විභාගය, 2017 දෙසැම්බර්**  
**கல்விப் பொதுத் தராதரப் பத்திர (சாதாரண தர)ப் பரீட்சை, 2017 டிசெம்பர்**  
**General Certificate of Education (Ord. Level) Examination, December 2017**

භූගෝල විද්‍යාව I, II  
 புவியியல் I, II  
**Geography I, II**

**Geography II**

- \* This paper consists of two parts - I and II.
- \* The question in Part I is compulsory. All **three** parts of it, namely (a), (b) and (c) should be answered.
- \* **Four** questions from Part II should be answered.
- \* The total number of questions to be answered is **five**.

**Part I**

1. (a) Study the 1 : 50 000 topographic map section provided to you and answer the questions based on it. In answering, use the paper (page No. 8) provided to you.  
 For questions from No. (i) to (iv), select the appropriate answer from the parentheses and write it.
  - (i) What is shown by No. ① ?  
 (Coral reef / Sand spit / Breakwater) (01 mark)
  - (ii) What is shown by No. ② ?  
 (River mouth / Delta / Lagoon) (01 mark)
  - (iii) What is the area shaded in pink colour shown by No. ③ ?  
 (Tourist zone / Conservation area / Built-up area) (01 mark)
  - (iv) What is shown by No. ④ ?  
 (Circuit Bungalow / Hotel / Rest House) (01 mark)
  - (v) What is the commercial crop widely distributed in the area? (01 mark)
  - (vi) What is the administrative boundary extending from A to B? (01 mark)
  - (vii) An Air strip is shown by C – D. State its length in kilometres. (01 mark)
  - (viii) What is the line shown by letter E? (01 mark)
  - (ix) Of the three areas in quadrats F, G and H which one is the area that would attract the largest number of people for various needs daily? (01 mark)
  - (x) Of the three areas F, G and H mentioned above, which one would be the area that possesses the highest religious diversity? (01 mark)
- (b) Carefully study the world map provided to you and answer the questions given below. In answering, use the space allocated by the side of the world map. (page No. 9)
  - (i) Of the mountain ridges shown by the three letters A, B and C which letter denotes the Pyrenees mountain ridge?
  - (ii) Of the three Peninsulas shown by the letters D, E and F, what is the letter that denotes the Florida Peninsula which was devastated by a cyclone recently?
  - (iii) Of the three letters G, H and J which letter denotes Lake Victoria?
  - (iv) Of the areas shown by letters K, L and M which letter denotes the ocean area affected by the cyclones known as Willy Willy?
  - (v) Of the locations shown by letters P, Q and R what is the letter that shows the location of Tokyo industrial region?

(05 marks)



**නව නිර්දේශය/புதிய பாடத்திட்டம்/New Syllabus**

ශ්‍රී ලංකා විභාග දෙපාර්තමේන්තුව/இலங்கைப் பரீட்சைத் திணைக்களம்/Department of Examinations, Sri Lanka

අධ්‍යයන පොදු සහතික පත්‍ර (සාමාන්‍ය පෙළ) විභාග 2017 දෙසැම්බර්

கல்விப் பொதுத் தராதரப் பத்திர(சாதாரண தர) ப் பரீட்சை, 2017 டிசம்பர்

General Certificate of Education (Ord. Level) Examination, December 2017

විභාග අංකය

கட்டெண்

Index Number

**(61) භූගෝල විද්‍යාව II**  
**புவியியல் II**  
**Geography II**

1. (අ) /(அ) /(a)

- (i) .....
- (ii) .....
- (iii) .....
- (iv) .....
- (v) .....
- (vi) .....
- (vii) .....
- (viii) .....
- (ix) .....
- (x) .....

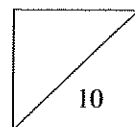
පරීක්ෂකවරයාගේ  
 ප්‍රයෝජනය පිණිසයි.  
 பரீட்சகரின் உபயோகத்  
 துக்கு மட்டும்  
 For Examiner's  
 Use Only



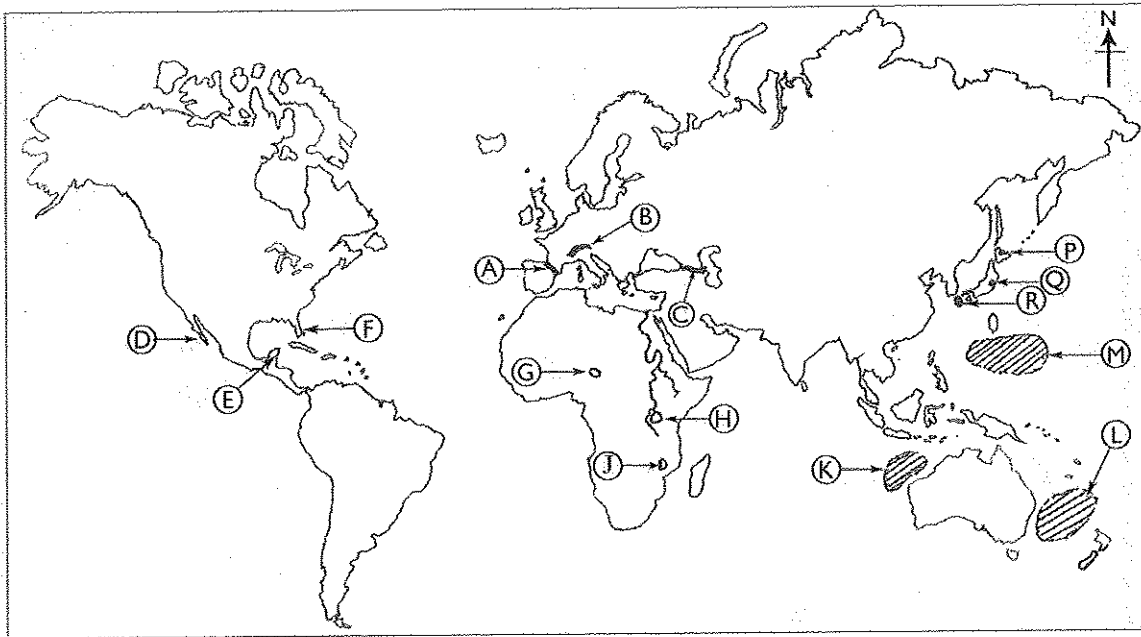






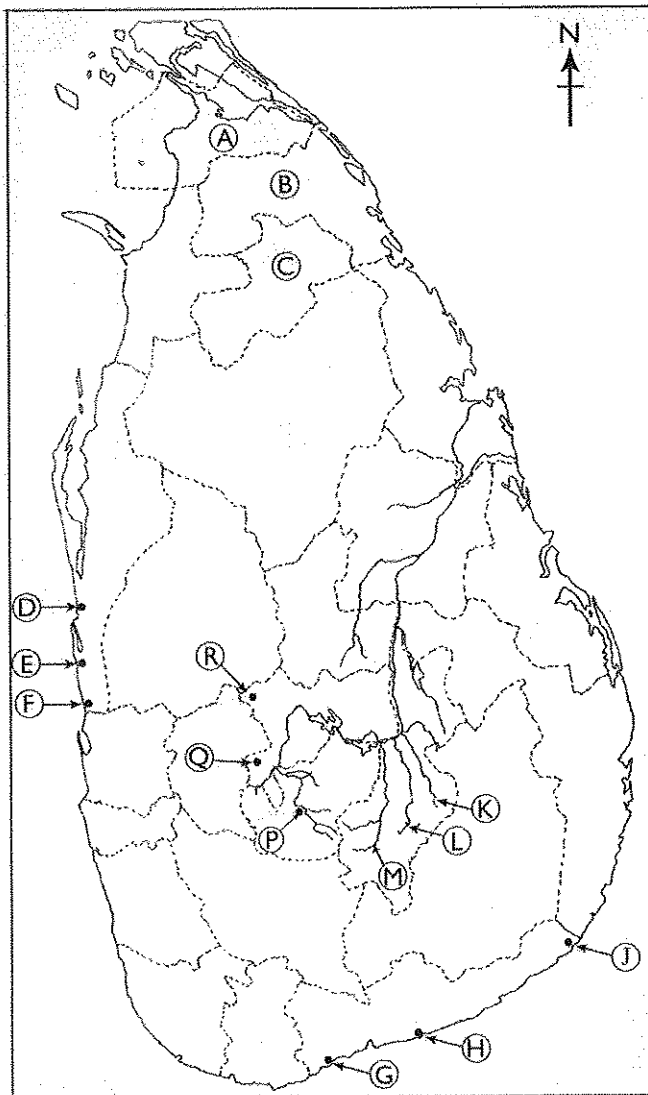



(අ) / (ඔ) / (b)



- (i)
- (ii)
- (iii)
- (iv)
- (v)
- 

(ඉ) / (ඔ) / (c)



- (i)
- (ii)
- (iii)
- (iv)
- (v)
- 

1. (අ) (ඔ) (a)  $\frac{10}{10}$

(අ) (ඔ) (b)  $\frac{5}{5}$

(ඉ) (ඔ) (c)  $\frac{5}{5} = \frac{20}{20}$



නව නිර්දේශය/புதிய பாடத்திட்டம் / New Syllabus

**NEW**

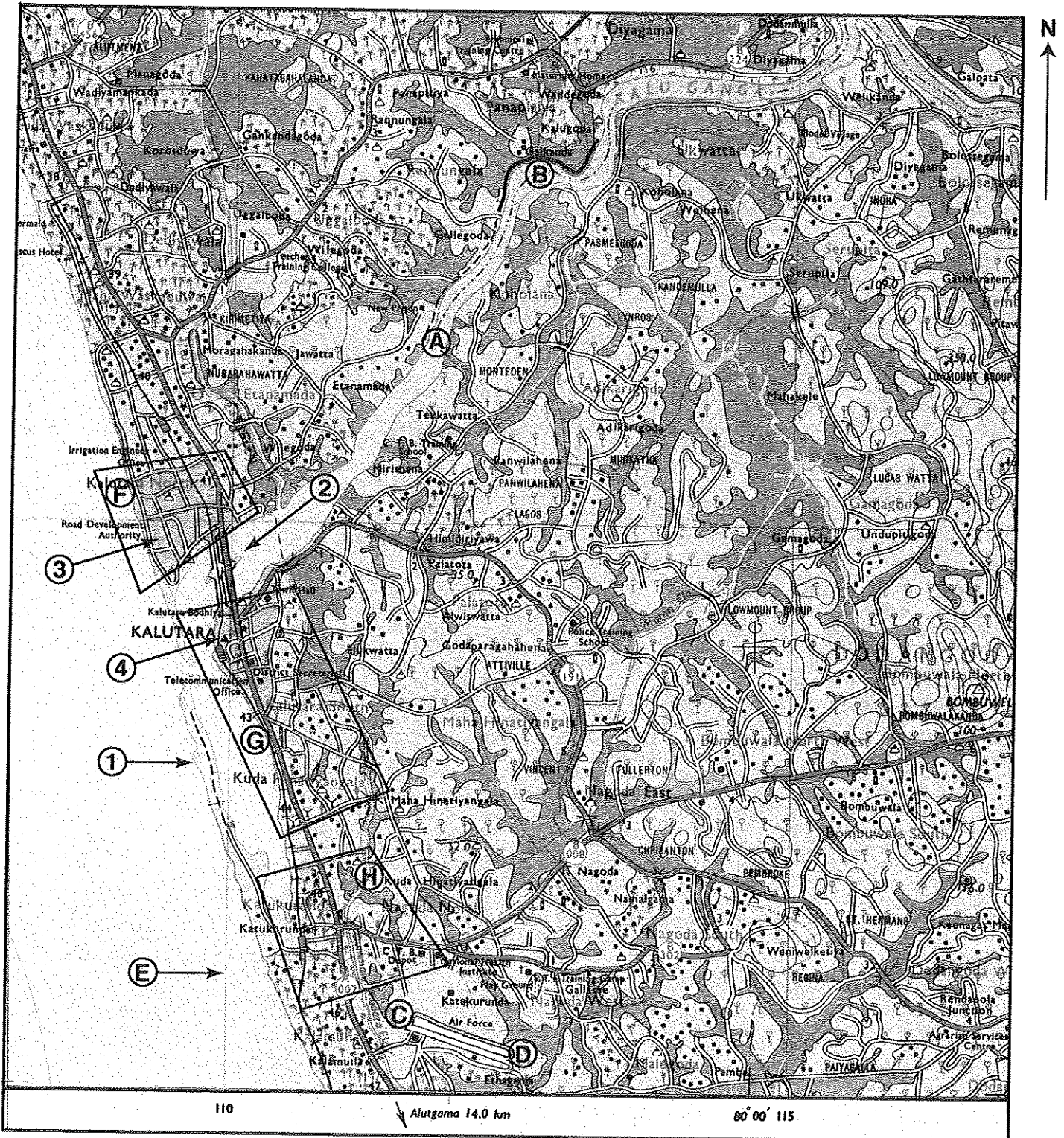
ලංකා විභාග දෙපාර්තමේන්තුව ශ්‍රී ලංකා විභාග දෙපාර්තමේන්තුව ශ්‍රී ලංකා විභාග දෙපාර්තමේන්තුව ශ්‍රී ලංකා විභාග දෙපාර්තමේන්තුව ශ්‍රී ලංකා විභාග දෙපාර්තමේන්තුව  
 இலங்கைப் பரீட்சைத் திணைக்களம் இலங்கைப் பரීட்சைத் திணைக்களம் இலங்கைப் பரීட்சைத் திணைக்களம் இலங்கைப் பரීட்சைத் திணைக்களம் இலங்கைப் பரීட்சைத் திணைக்களம்  
 Department of Examinations, Sri Lanka

**61 II**

අධ්‍යයන පොදු සහතික පත්‍ර (සාමාන්‍ය පෙළ) විභාගය, 2017 දෙසැම්බර්  
 கல்விப் பொதுத் தராதரப் பத்திர (சாதாரண தர)ப் பரீட்சை, 2017 டிசெம்பர்  
 General Certificate of Education (Ord. Level) Examination, December 2017

භූගෝල විද්‍යාව II / புவிப்பியல் II / Geography II

2733



SCALE 1 : 50 000

source/past-papers/